

Smart modern design, perfect furniture picks and sleek custom built-ins mean this stylish Victoria couple can live large in their small-scale home.

By Athena McKenzie | Photos by Jeffrey Bosdet

SMALL SPACE AMPLIFIED STYLE

The neutral colour palette creates an airy, spacious flow through the interior. The kitchen features rift-oak shelving and eco-friendly birch plywood cabinets. The treads of the floating staircase were milled from old-growth cedar reclaimed from the Royal Victoria Yacht Club.

Beyond its undeniable stylishness, one of the most striking aspects of Jody and David Adelman's new townhouse is how they've optimized the space. It's not surprising, given they own Parc Modern, which specializes in sophisticated furnishings and home décor that fit the smaller scale of today's condos and homes.

The Adelmans' expertise was put to full use for their move — with their two dogs, Bentley and Lincoln — from a one-level, 1,400-square-foot condo into the 1,260-square-foot, three-level townhouse.

"People actually think it's bigger than our old space because there are different levels and it's so open," David says.

Large, floor-to-ceiling architectural windows provide an abundance of natural light, and high ceilings and an open, flowing floor plan contribute to the spacious feel. A glassed-in floating staircase with large skylights above creates a column of light at the centre of the home, helping define the interior.

"When you walk in the front door, you can see right through the kitchen and living room and out the back windows," Jody says. "There are no walls or obstacles obstructing your line of sight and cutting up the space into small rooms."

EUROPEAN INSPIRED

Their new home is part of the Frank development by Aryze: a six-unit townhome complex in James Bay and within easy walking distance of the Inner Harbour and Dallas Road.

"We have always been intrigued by the brownstone-style homes in Brooklyn and their counterparts in Europe, where each home has a shared wall and a driveway entering into a garage on the lower level," says Ryan Goodman, manager of development and land acquisition for Aryze. "We wanted to provide a highly functional home that was better, not bigger ... a condo alternative with multiple floors of living space."



**THE GLASS
CAN BE HALF EMPTY
OR HALF FULL
AS LONG AS THERE'S
MORE IN THE
BOTTLE**



metroliquor
specialty liquor stores

Purveyors of specialty wines, spirits & ales

Brentwood Bay 7180 West Saanich Road
250.544.2003 | metroliquor.com



Spring Stock HAS ARRIVED



250-748-4977

Industrial Metal
Furniture
Outdoor Rattan
Fountains
Planters
More

GardenStone.ca

A monochromatic colour scheme helps with the seamless transition from room to room and floor to floor. The Adelmans credit Parc Modern designer Ben Tombs, who helped with colour and material selections.

“We stuck with greys, earth tones, off-whites and taupes,” David says. “To add visual interest, there are different textures and elements, such as marble, steel, wood, rift-cut oak and leather. Touches of colour are brought in art and accessories.”

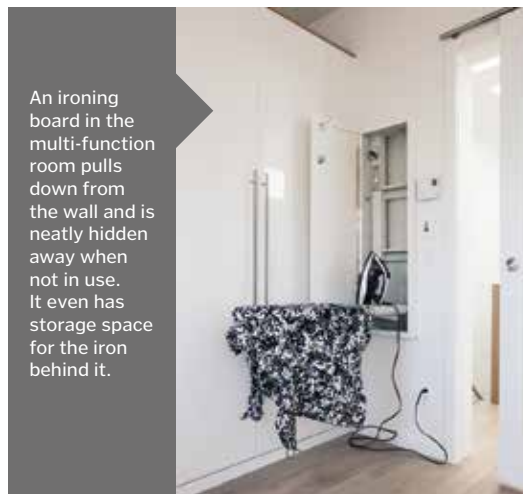
SMALL-SCALE SOLUTIONS

Along with custom built-ins, including a shoe rack in the foyer, a buffet in the dining room and an entertainment panel in the living room, furniture choice was an essential element in optimizing the space.

A small sectional and chair provide flexibility and functionality in seating in the living room. Round nesting tables, which are easier to get around than square or rectangular options, provide a pleasing visual contrast to the linear upholstered furniture.

“You need to be cognizant of the room shape and scale, and be careful not to overfill it,” David says. “Just because you have 10 feet doesn’t mean you should have a 10-foot sectional.”

Upstairs, the second bedroom has been converted into a multi-function room, and can be used as an office, ironing room, yoga/workout space and guest suite. The sliding barn door means that none of the space is taken up with door swing, which is especially important when the sofa bed is extended.



An ironing board in the multi-function room pulls down from the wall and is neatly hidden away when not in use. It even has storage space for the iron behind it.



SMALL-SPACE LIVING TIPS from Jody and David Adelman

- **Don't overfill with furniture.** You need negative space and ingress and egress to be able to get around the furniture. Instead of a large sectional, consider a sofa, a chair and a couple of ottomans for functionality and flexibility.
- **Keep the colour scheme monochromatic** so the space flows. You can add visual interest by using different textures.
- **Lighting is key.** You can never have enough. Add pot lights where possible. Dimmers are essential in creating atmosphere through lighting.
- When downsizing, absolutely **do not bring all your furniture.** Bring those couple of pieces that you love and think may fit — but sell everything else.
- **Use touch latches on cabinets** in tiny bathrooms where handles will take up too much space.
- **Invest in multi-functional pieces** such as dining tables that extend, nesting tables and pullout sofas. **Install pullout drawers** in your kitchen cabinetry.



Nourish and Moisturize

Episilk™ PHA Serum

is an intensely hydrating serum that rejuvenates skin from the inside out. It improves the tone, appearance, suppleness and elasticity of skin by enhancing the skin's ability to retain moisture. Its light, non-oily texture soothes skin leaving it fresh and soft while smoothing fine lines and wrinkles.



hyalogic



**LIFESTYLE
MARKETS**
lifestylemarkets.com

Victoria
2950 Douglas St. • 250.384.3388
Sidney
9769 Fifth St. • 250.656.2326
Cook Street Village
343 Cook St. • 250.381.5450

HIGH QUALITY SKIN CARE, HAIR CARE, SUPPLEMENTS & MORE...



YOUR FRESH PET FOOD CONNECTION



You won't find kibble
in our store!

VISIT US OR CALL FOR LOCAL DELIVERY

118-2871 Jacklin Road • 250-391-4475 • www.growlies.ca

[Facebook.com/Growlies](https://www.facebook.com/Growlies) [@Growlies](https://twitter.com/Growlies) [@Growlies4Pets](https://www.instagram.com/Growlies4Pets)

ingridjarisz 

SELLS VICTORIA

Personal Real Estate Corporation



Take your lifestyle to new heights!

DOWNTOWN LIVING, envision the next chapter of your life, from ocean views to charming neighbourhoods, the city's finest residences are for you to discover.

Let's explore and see if urban living is the lifestyle for you!



Newport Realty

CHRISTIE'S
INTERNATIONAL REAL ESTATE

2444 Beacon Ave
Sidney, BC V8L 1X6
Tel: 250.656.4626
www.ingridjarisz.com



Large IKEA closets in both bedrooms provide ample storage. Baseboards and mouldings were used to make them look like built-ins.

"We had a nice walk-in closet in our condo, but we like these even better," Jody says. "The hanging is more organized and we have custom features, such as a jewelry tray and double-level shoe racks."

CUSTOM ADD-ONS

Because David and Jody purchased their home in the framing stage of the project, there was some flexibility in customizing their unit. This is most evident with the powder room on the first floor, which did not exist in the original design.

"No first-floor bathroom was a deal breaker for me," Jody says. "So we shortened the kitchen a bit to put in the powder room. We have guests that are a little more elderly, and hopefully we'll have grandchildren down the road. We don't want to be running up and down the stairs."

This eye to detail and planning for the future is evident throughout. While the "bonus room" downstairs is now a media room, the Adelmans say they can convert



The light, neutral palette extends through the whole house, even into the bathrooms. The space next to the shower in the master bath was originally closed in with drywall and would have been wasted, but the Adelmans had it opened up and added shelving for towels and bathroom essentials.



it to an in-house gym or an extra guest room, depending on need.

"Of course, if we have lots of grandchildren and family visiting us all the time, we might have to go bigger again!" David jokes.

For now, though, the Adelmans see a long future in their small space, biking the area and walking Lincoln and Bentley around the Inner Harbour.

"It's a different lifestyle," David says. "And we love it." ::

RESOURCES

Builder: Aryze Development and Construction

Architect: Low Hammond Rowe Architects

Landscaping: Biophilia

Furnishings and accessories: Parc Modern

Custom cabinetry and interior design:
David Adelman and Ben Tombs

Building envelope:
Chouinard Exterior Wall Systems

Doors and hardware: McGregor & Thompson

Flooring and tile: Island Floor Centre

Framing and construction materials:
Home Lumber & Building Supplies

Countertops: Exotic Stone

Finishing carpentry: AP Woodworks

Tempered glass railings and walls:
B & E Glass and Mirror

Electrical contractor: CBS Electrical

Plumbing and mechanical contractor:
Deep Cove Plumbing and Gas

Painting: High End Painting

Plumbing fixtures: Bartle & Gibson

Fresh florals: Poppies Floral Art

bueno



1023 Fort Street, Victoria
BC, V8V 3K5

250 920 7653
www.heartandsole.com

heart + sole

UNIQUE FOOTWEAR • HANDMADE ACCESSORIES

Crizal 
Live life in the clear

COMPLETE EYE EXAMINATIONS BY
DR. JASON MAYCOCK
DR. TOBY VALLANCE
DR. MANDY LETKEMANN
OPTOMETRISTS

THIERRY LASRY

 **maycockeyecare**
Since 1949

1318 Blanshard Street | 250.384.4175 | maycockeyecare.com